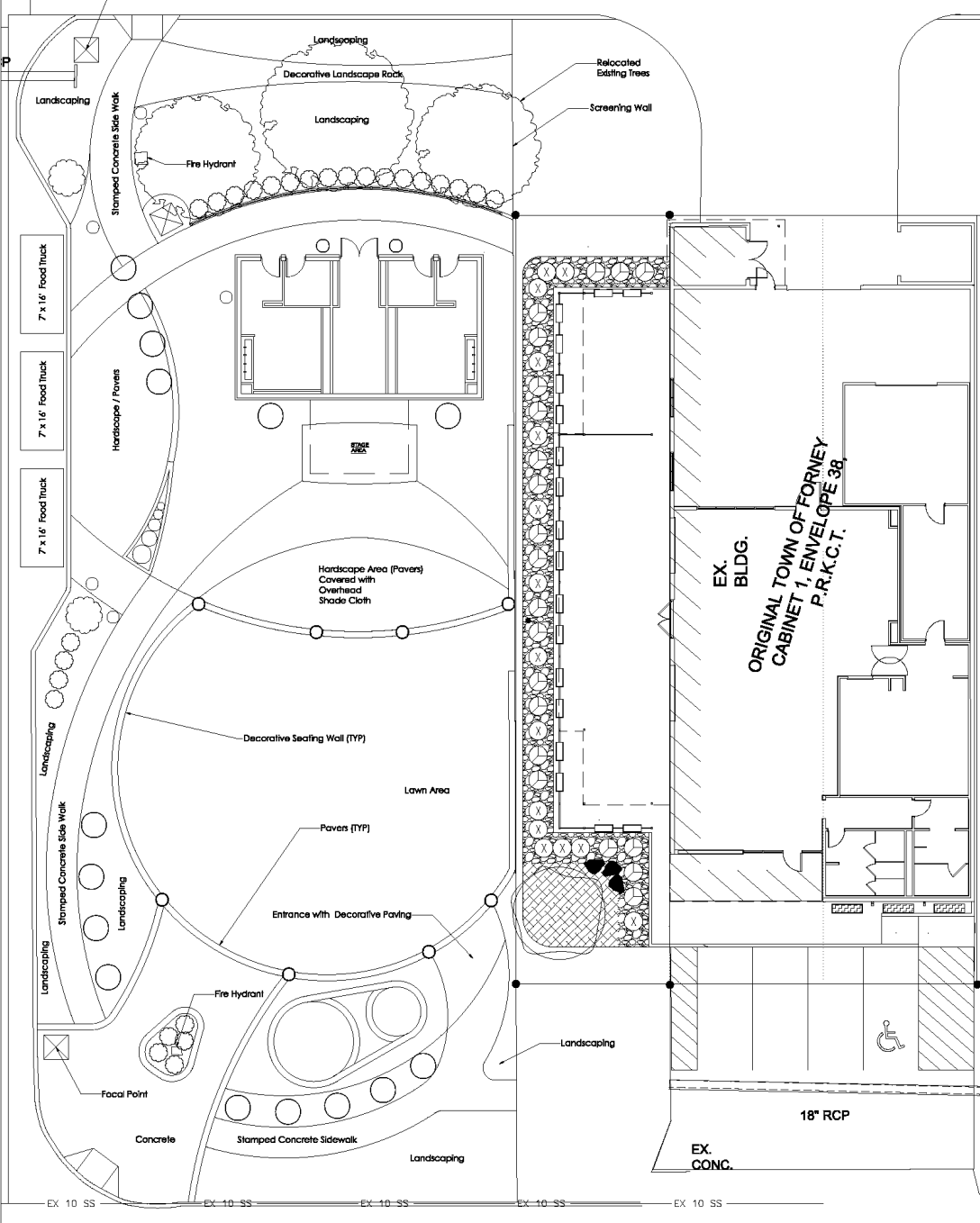


# Roland Tyler Park

Forney, TX

**FRONT STREET (ASPH. ROAD)**  
 (VARIABLE WIDTH R.O.W., CAB. 1, ENV. 38,  
 P.R.K.C.T.)



# Landscape Plan & Rendering



# Landscape Area – Materials



Lawn – Buffalo Grass



Mexican Pebble Stone



River Rock



Concrete Bowl Planters



Relocate Existing Crape Myrtles



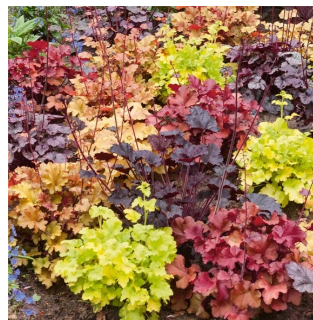
Mexican Feather Grass



Texas Lantana



Coneflower



Coral Bell



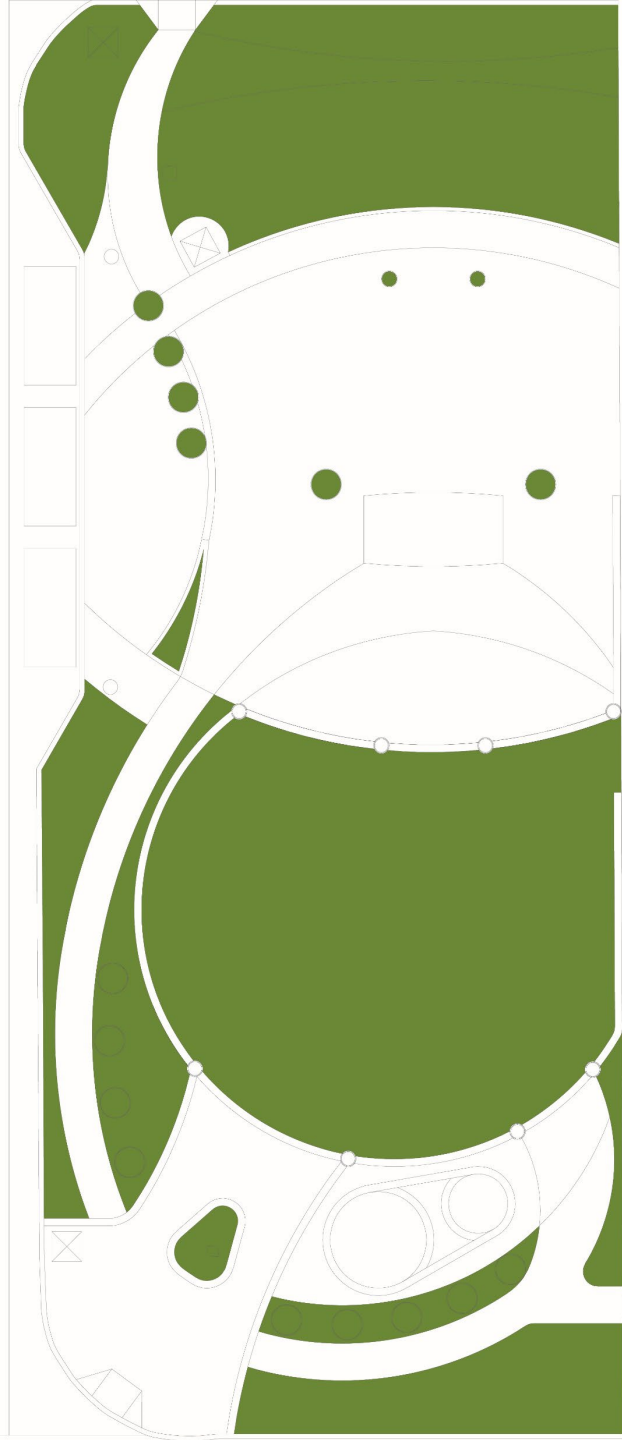
Mexican Heather



Rose Creek Abelia



Agave



# Hardscape Area – Materials



Sawcut Concrete Sidewalk



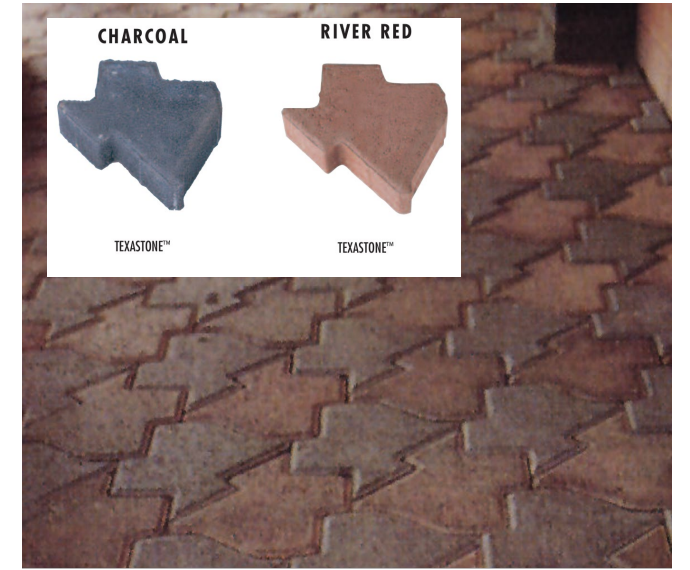
Stamped Concrete



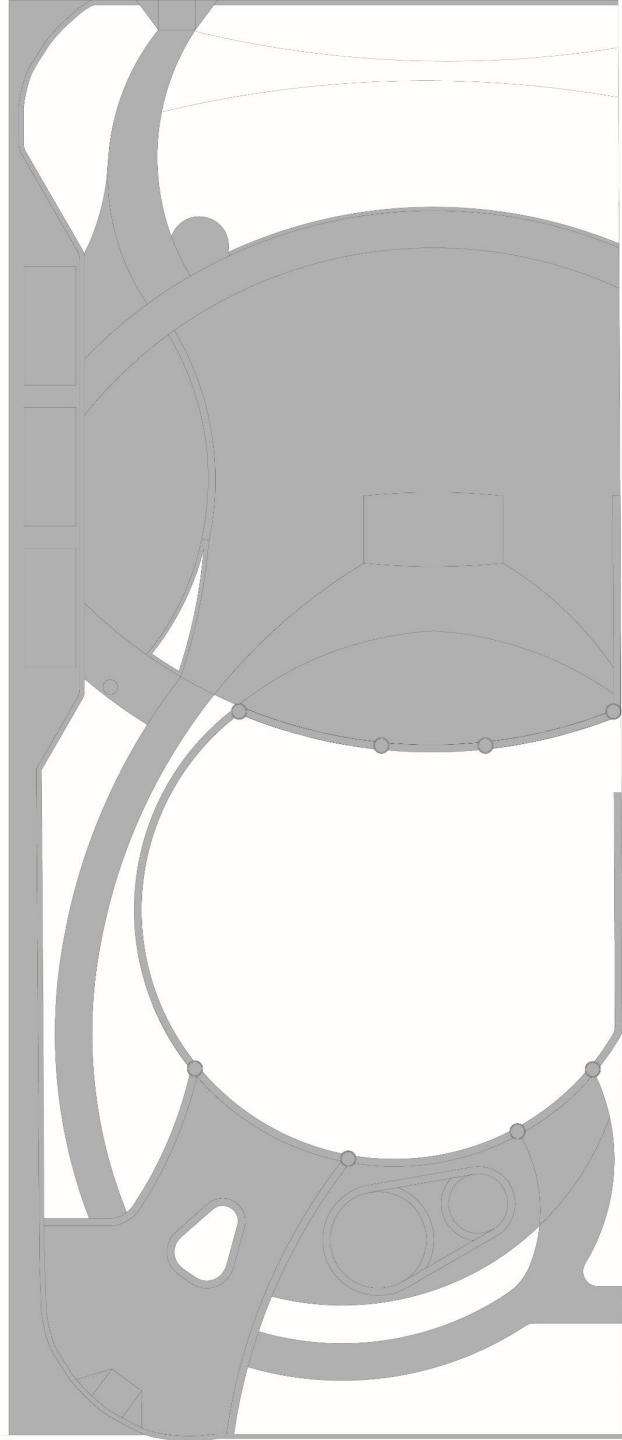
Stamped Concrete



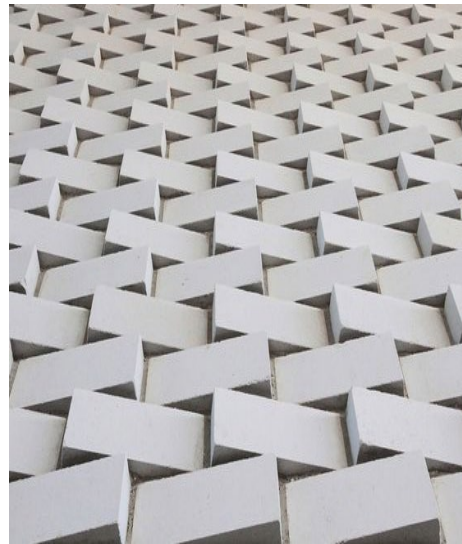
Permeable Pavers



Texas Shaped Pavers – Potential Donor Opportunity



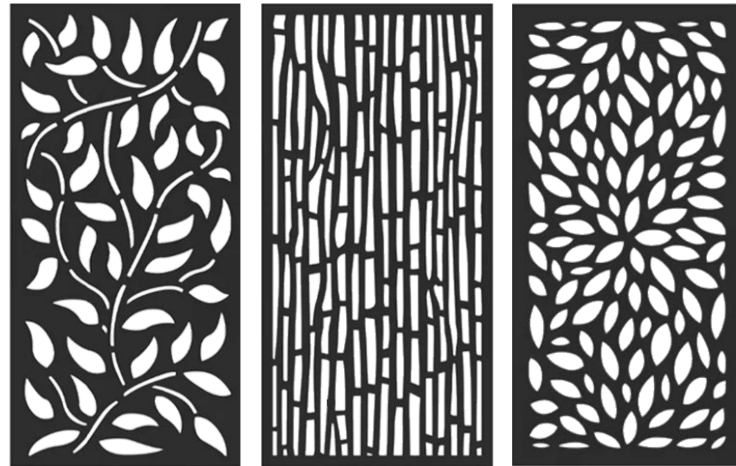
# Landscape Walls – Materials



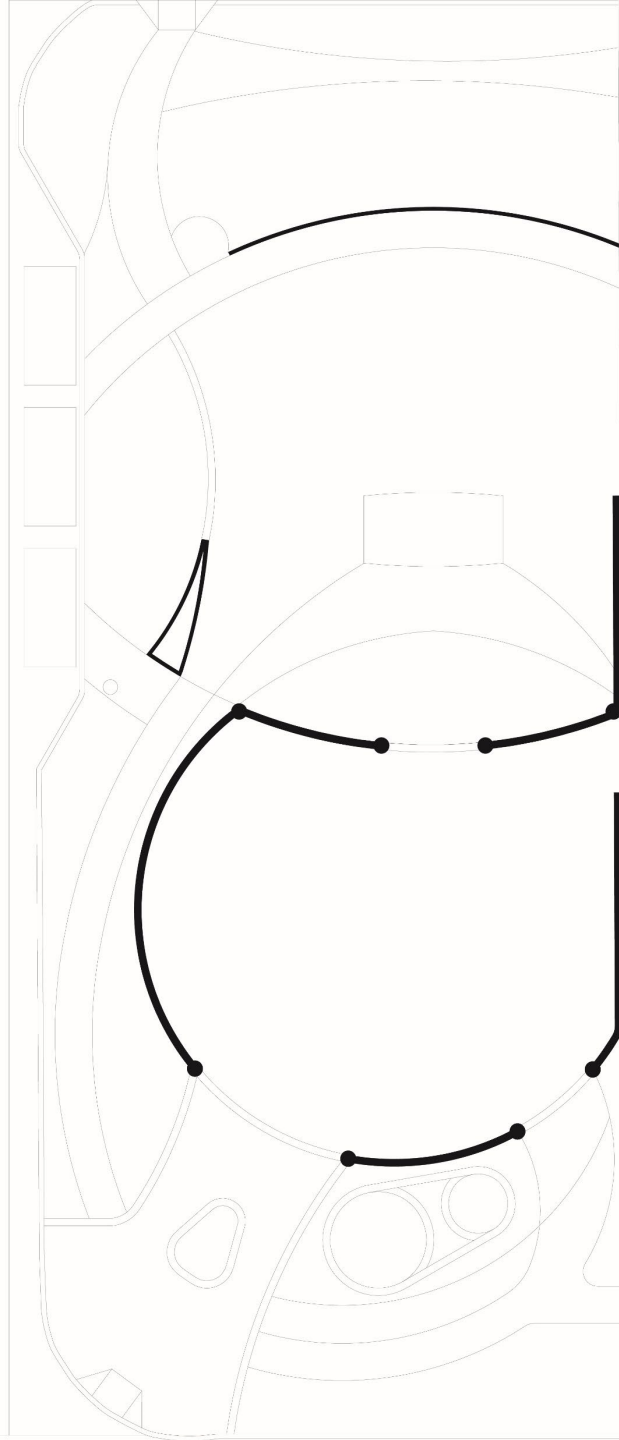
Unique Brick Patterns to Match Building



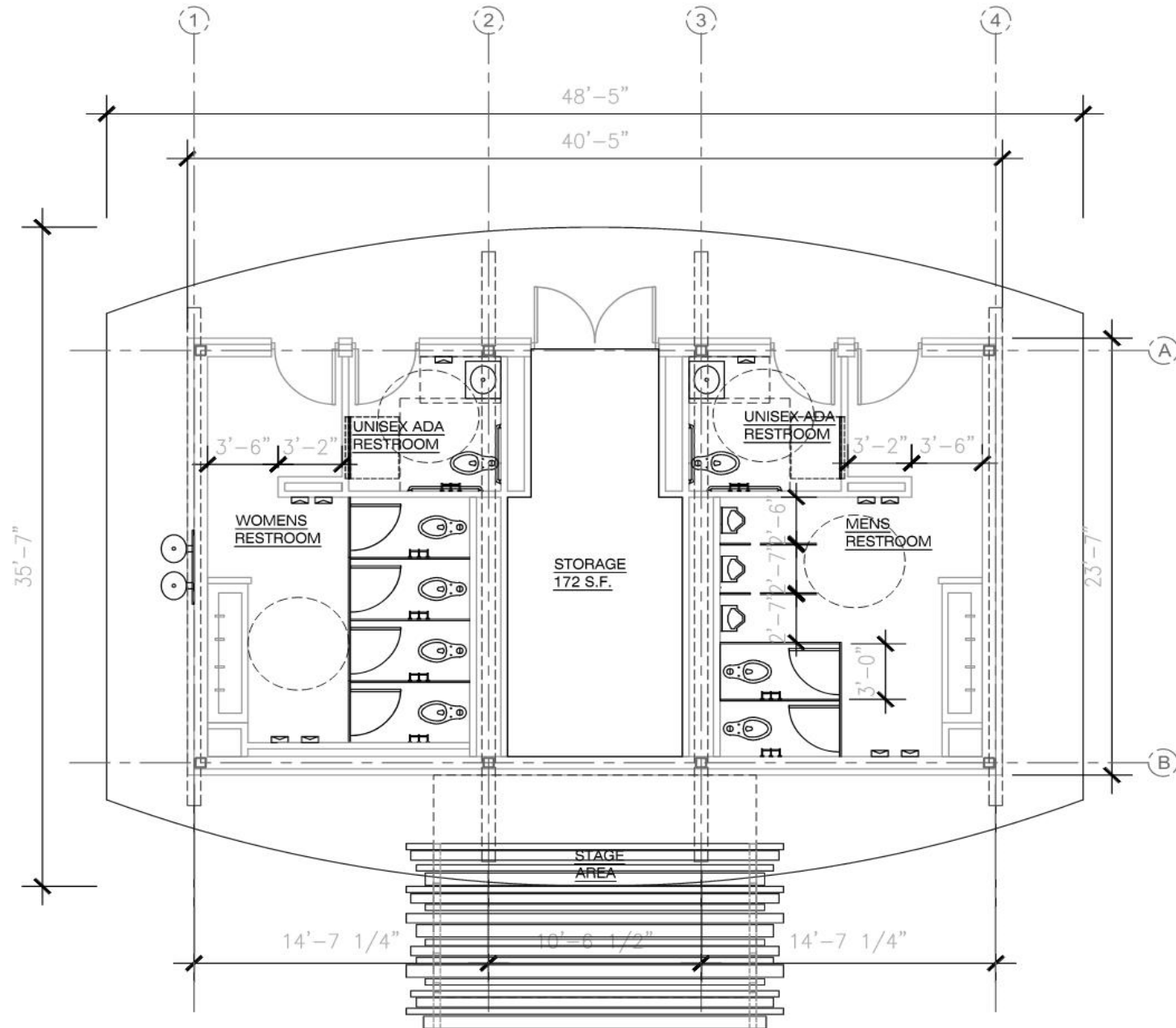
Example of Curved Wall with Columns



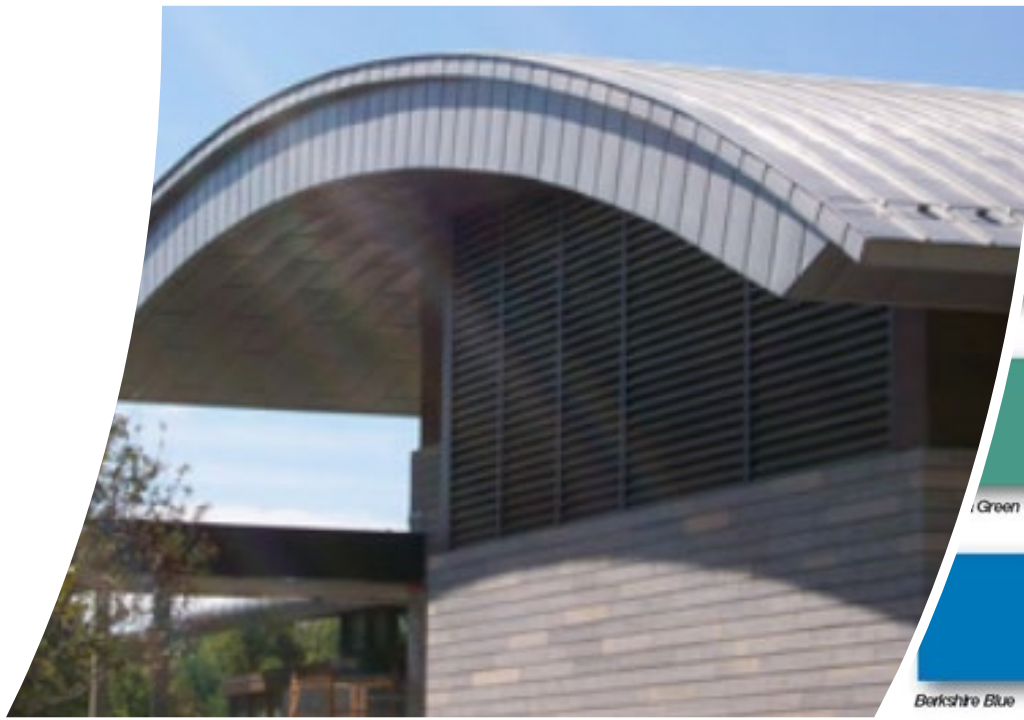
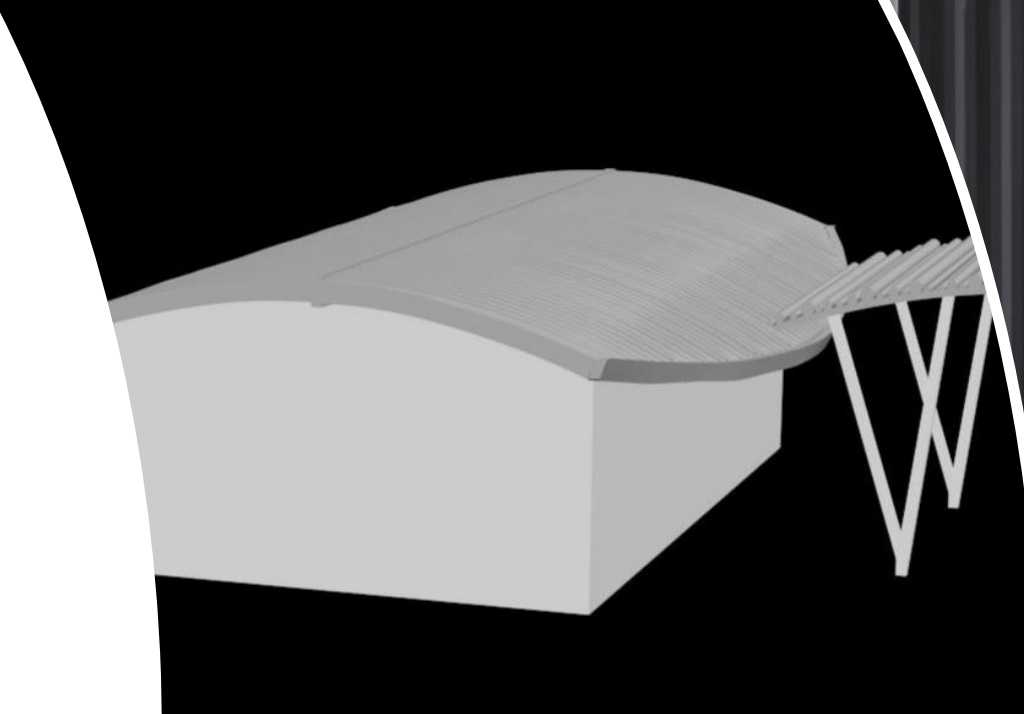
Decorative Privacy Screen

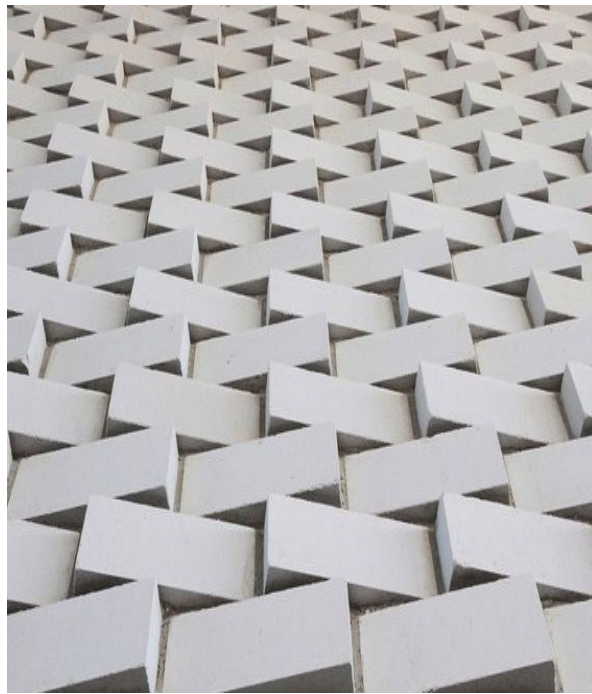


# Architectural Floor Plan

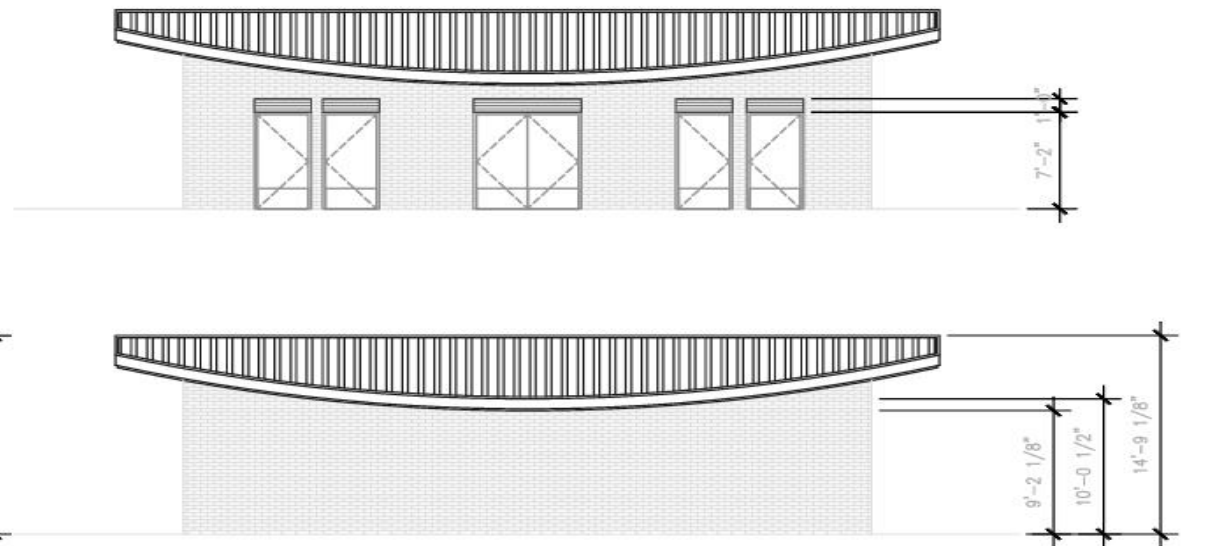
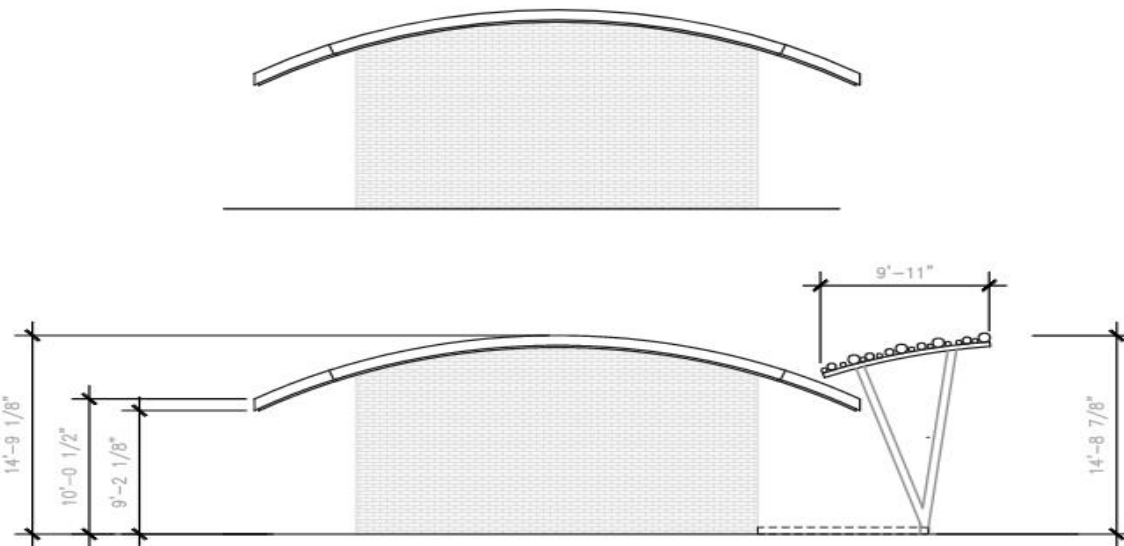


- Exterior Materials





## Exterior Materials







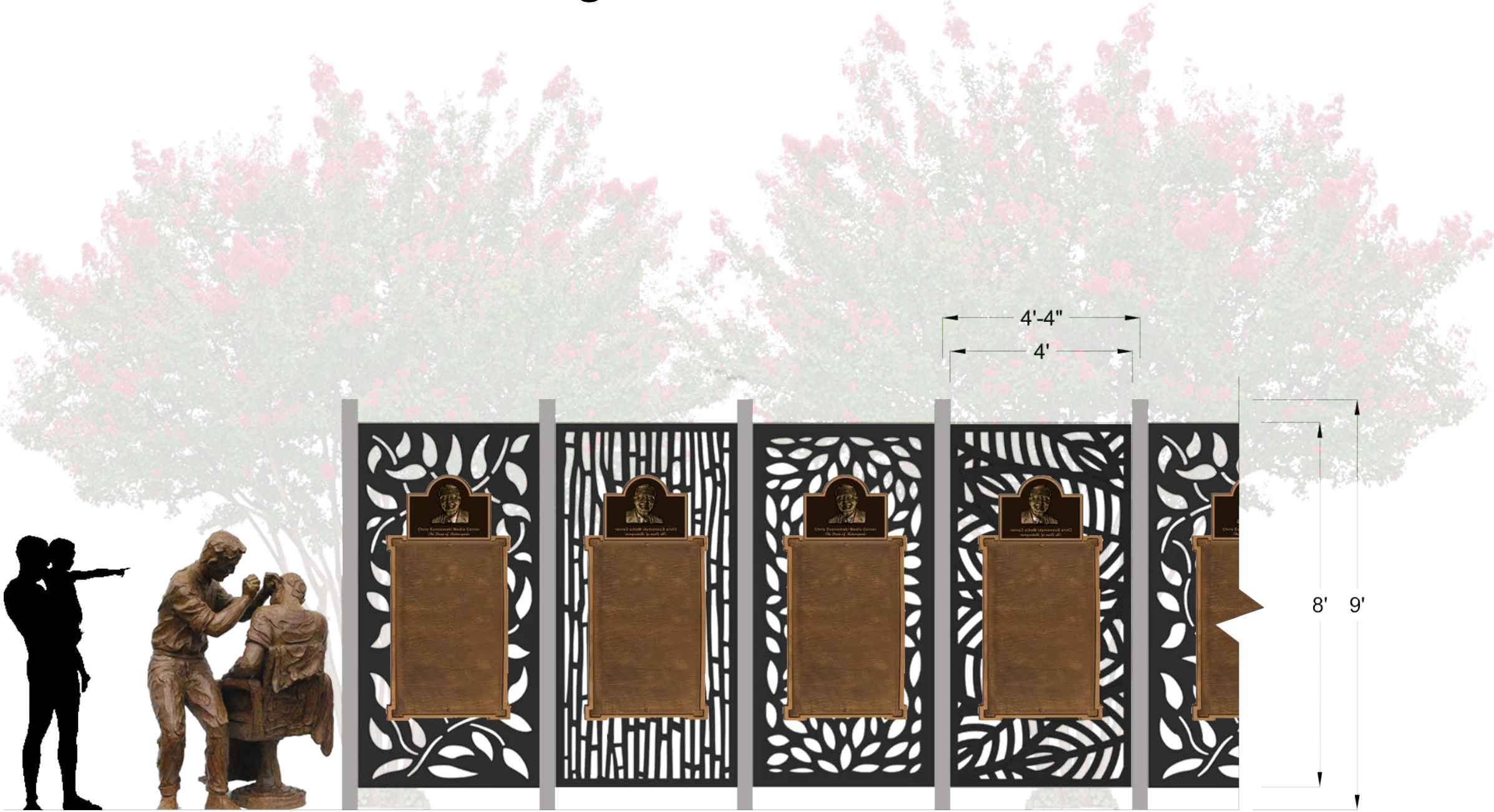


# Barber Statues

---



# Section of Screening Wall with Historical References



# Historical References – Businesses

- Roland Tyler – High Stylers Beauty Shop
- Rabbit Hut – Restaurant
- Gossett’s – Pies
- City Café
- Adams Drug Store – “Been Here Always” 1901 – 1974
- Forney Cotton Gin Industry
- C.F. Priest – Blacksmith 1896 - 1906



# Budget

## Building Restrooms/Storage Building

23'7" x 40'5" as specified in drawings, arched roof with standing seam, bricked exterior, steel framing, zip board & flashing, commercial gyp. board, anti-graffiti exterior paint, terrazzo flooring in bathrooms, polished concrete in storage area, includes all plumbing, fixtures, partitions, water heaters, includes all HVAC, electric, framing, exterior finish, countertops, trim work, flooring, concrete. Includes 15% contingency

1x \$713,700.00

Concrete misc concrete and decorative concrete  
1024sqft stamped/concrete w/ integral color  
3500 sqft concrete around building, behind lawn area  
191' 2' concrete wall  
2' diameter column/benches

1x \$126,081.25

Fabrication cover for stage area as specified, fabrication, materials, powdercoat and labor to install

1x \$26,350.00

Landscaping 3641 sqft landscaped area w/ plantings \$151,200,  
3145sqft buffalo grass lawn \$16,250  
288sqft mexican pebble \$3500  
6255sqft permeable pavers w/ base \$178,310  
8x 4'x8' decorative metal planters \$33,250  
7x screening wall columns ?  
13x 4' bowl planters \$17,500  
2x 2' diameter bowl planters \$3500  
2x industrial metal trash can \$3500  
4x move existing trees \$78,500

1x \$485,510.00

Grading estimate for grading without firsthand knowledge of topography, soil type or obstructions. 250 dozer hrs  
40x loads of dirt

1x \$84,000.00

Misc Items 8x screen panels \$17,600  
custom fabricated animal benches \$103,500

1x \$121,100.00

Plumbing all outdoor non-building plumbing dog fountain/drinking fountain, irrigation, fire hydrant

1x \$96,500.00

Electric outdoor lighting, receptacles, and general connections

1x \$117,000.00

City Permit City permits & fees \$0.00

20'x20' Splash Pad  
Includes grading, concrete, plumbing, equipment, filters, and specialty flooring  
1x \$101,300.00

Roylan Tyler Barber shop chair bronze sculpture

1x \$75,000.00

Shade Sails  
Includes eleven (11) 17x17x24 vinyl sun shades with structural mounting poles, Steel cabling, foundations, and installation

1x \$47,000.00

\*\*\*INCLUDES 20% CONSTRUCTION BUDGET CONTINGENCY\*\*\*

TOTAL \$1,993,541.25

**Current Budget Total: \$1,993,541.25**

Architectural blueprints are shown in the background, featuring various technical drawings, dimensions, and annotations. The drawings are partially unrolled, showing a complex layout with numerous lines, circles, and numerical values. The overall color scheme is light blue and white, giving it a professional and technical appearance.

# Planning Process & Next Steps

- **Site Entitlements**
  - Architectural Review Committee (5 – 6 weeks)
  - Planning & Zoning (4 – 5 weeks)
  - City Council
- **Building & Park Permitting**
  - Civil Plans – 5 weeks
  - Building / Construction Documents – 10 -12 weeks
  - Additional time is required if water feature is included (Health & Safety Inspection)
  - 80% construction document set sent to general contractor(s) to get final construction budget numbers + 30% contingency